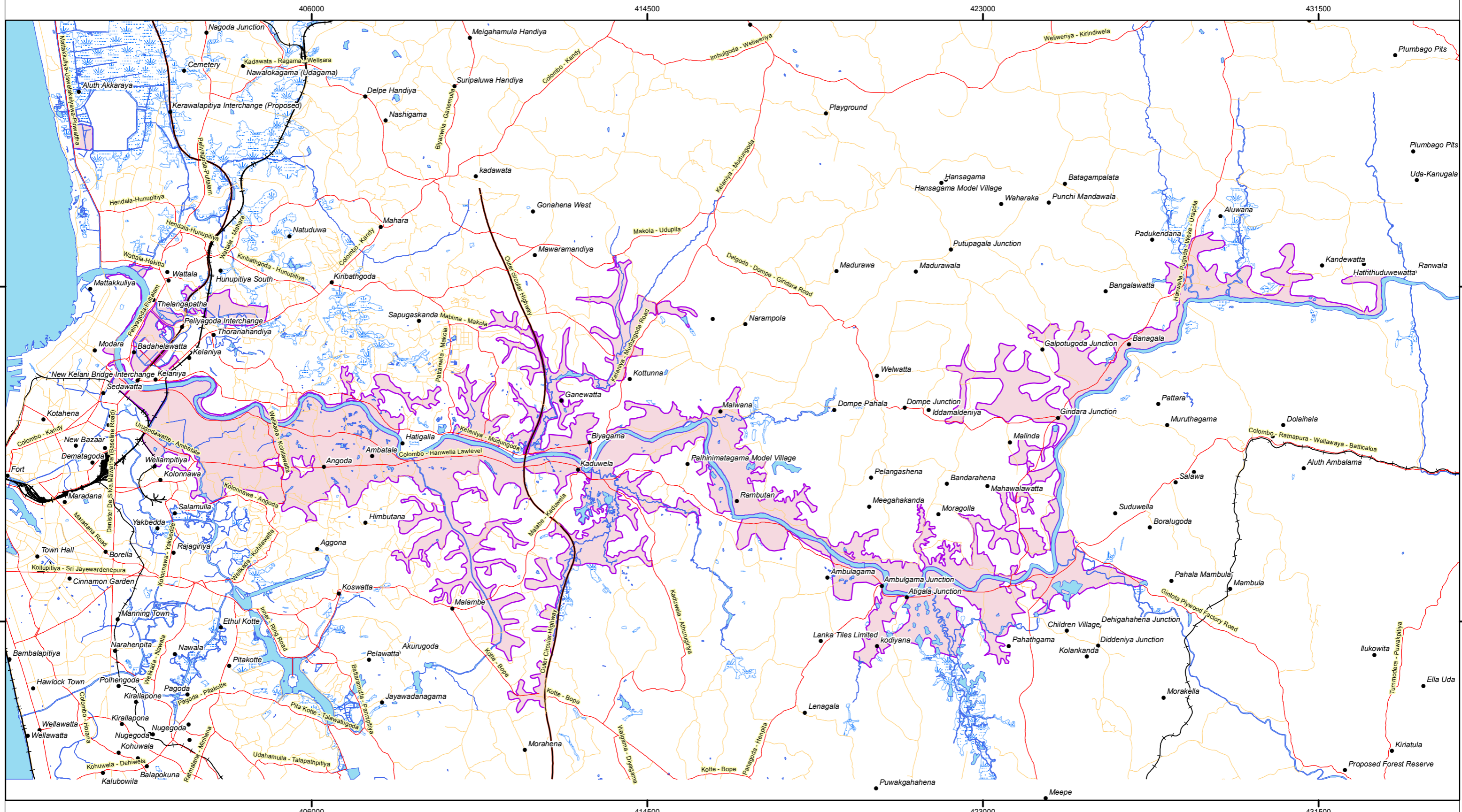


# Flooding Area Around Kelani River Basin (Part of) - May 2016



This map is based on data collected on 23rd May - 02nd June 2016.  
 Map to be updated after field verification. Field data collection is in progress.  
 Field Data collected by Hydrographic Survey Unit of Sri Lanka Navy.  
 Prepared by GIS Branch, Survey Department of Sri Lanka.  
 Map published on 03rd May 2016

1:90,000

### Legend

- Flood\_Area
- Expressway
- Secondary Road
- Hydro Features
- Place Names
- Main Roads
- Railway
- Marsh Area